

**Working Paper No 20/07**

**Older and Wiser?  
Birth Order and IQ of Young Men**

by

**Sandra E. Black  
Paul J. Devereux  
Kjell G. Salvanes**

SNF project no 1885

“Family, work and welfare: Economic perspectives”

Funded by The Research Council of Norway

CASE - Centre for Advanced Studies in Economics

INSTITUTE FOR RESEARCH IN ECONOMICS AND BUSINESS ADMINISTRATION  
BERGEN, AUGUST 2007  
ISSN 1503-2140

© Dette eksemplar er fremstilt etter avtale med KOPINOR, Stenergate 1, 0050 Oslo. Ytterligere eksemplarfremstilling uten avtale og i strid med åndsverkloven er straffbart og kan medføre erstatningsansvar.

## *CASE – CENTRE FOR ADVANCED STUDIES IN ECONOMICS*

CASE – Centre for Advanced Studies in Economics – is a joint centre for The Norwegian School of Economics and Business Administration (NHH), The Institute for Research in Economics and Business Administration (SNF) and The University of Bergen (UiB). Research at CASE includes all types of issues based on economic theory and method, and researchers at the Centre have particular expertise within the areas of international trade, industrial economics, labour market economics, factor mobility, economic integration, industrial policy, international macro economics, tax policy, international transport and maritime research.

### *International Trade and Tax Policy*

Research within this area focuses mainly on issues related to international trade and tax policy, and has generally been dominated by projects aiming to provide increased insight into global structural issues and the effect of regional economic integration. The staff have particular expertise within the fields of international real economics (trade, factor mobility, economic integration and industrial policy), international macro economics and international tax policy, but are also actively involved in projects relating to public economics and industrial policy.

### *Industrial Economics*

Industrial economics is another central research area at the Centre, within which SNF has long-standing traditions. A series of individual studies have been carried out through large framework programmes funded by the Research Council of Norway and major Norwegian companies. The focal point of these studies is strategic company behaviour in industries with few players, where competition effects are modelled and analysed. The studies have provided important structural and empirical insights into deregulation effects within industries such as airlines, telecommunications and energy and have provided significant input to Norwegian competition policies. The research group includes a number of researchers at both UiB and NHH and has an extensive international network.

### *Labour Market Economics*

The labour market group focuses on mainly two research areas. One central topic is education and family economics. An important aspect is to analyse the production process for human capital; the importance of family, neighbourhood, preschools and schools for adult education and labour market experience. The other main topic is to analyse firm performance and firm restructuring. These analyses include firm performance, adjustment costs, costs of displacement including health costs, the effect of technological change and international trade, and analysis of organisational change.

### **Human Resources**

CASE is a network-based organisation whose staff consists mainly of professors at Department of Economics at NHH and UiB as well as leading international economists who are affiliated to the centre through long-term relations. Members of the academic staff are among the leading in their fields both nationally and internationally and many have served on important public committees. During the last few years the centre has produced several PhDs and the current staff also includes PhD scholars.

### **Networks**

CASE participates in a Scandinavian Network of Excellence on labour market economics and is involved in a major EU project on international trade. The Centre collaborates with central research and educational institutions all over Europe and has particularly close contact with London School of Economics, University of Glasgow, University of Munich, University of Uppsala, Aarhus Business School, Stockholm School of Economics, The Frisch Centre at University of Oslo and Statistics Norway. The staff members participate in international research networks, including CESifo, CEPR, CEP, IZA and IAME.

# Older and Wiser? Birth Order and IQ of Young Men\*

by

Sandra E. Black  
Department of Economics  
UCLA  
NHH, IZA and NBER  
sblack@econ.ucla.edu

Paul J. Devereux  
Department of Economics  
School of Economics and Geary Institute, University College Dublin, CEPR and IZA  
devereux@ucd.ie

Kjell G. Salvanes  
Department of Economics  
Norwegian School of Economics, Statistics Norway, Center for the Economics of  
Education (CEP) and IZA  
kjell.salvanes@nhh.no

May 2007

## **Abstract**

While recent research finds strong evidence that birth order affects children's outcomes such as education and earnings, the evidence on the effects of birth order on IQ is decidedly mixed. This paper uses a large dataset on the population of Norway and focuses on the effect of birth order and family size on IQ, an outcome not previously available in datasets of this magnitude. Importantly, we find a strong and significant effect of birth order on IQ, and our results suggest that earlier born children have higher IQs.

---

\* Black and Devereux gratefully acknowledge financial support from the National Science Foundation and the California Center for Population Research. Salvanes thanks the Research Council of Norway for financial support. We are grateful to the Medical Birth Registry for Norway for providing the birth registry data. We are also indebted to Stig Jakobsen who was instrumental in obtaining data access to the IQ data from the Norwegian Armed Forces.

## 1. Introduction

The psychology literature has long debated the role of birth order on children's IQ. The debate was seemingly resolved when, in 2000, Rodgers *et al.* published a paper in the *American Psychologist* entitled "Resolving the Debate Over Birth Order, Family Size, and Intelligence" that referred to the apparent relationship between birth order and IQ as a "methodological illusion."<sup>1 2</sup> However, since that time, the economics literature, using data on the population of Norway, has found strong evidence that birth order affects educational attainment and earnings. (See Black, Devereux, and Salvanes, 2005). This leads one to wonder: how can we reconcile the strong relationship between birth order and educational attainment with a literature suggesting no relationship between birth order and IQ?

Previous work has been limited due to an absence of large datasets necessary to identify these effects. This paper uses a large dataset on the population of Norway and focuses on the effect of birth order on IQ, an outcome not previously available in datasets of this magnitude.<sup>3</sup>

Consistent with our earlier findings on educational attainment but in contrast to the previous work in the literature, we find strong birth order effects on IQ that are present both in between-family (cross-sectional) and within-family analysis. Later-born children have lower IQ on average and the differences are quite large. For example, the difference between first-born and second-born average IQ is on the order of one fifth of a

---

<sup>1</sup> Page 599.

<sup>2</sup> In the June/July issue 2001 of *The American Psychologist* several articles from leading researchers within this field debated the findings in Rodgers *et al.* (2009), and Rodgers stated in an article in that issue that "The existence of a birth order effect on intelligence is a phenomenon still in search of data to support its evidence. Until such data are found, models of the phenomenon cannot be taken seriously." (Rodgers, 2001, p 510).

standard deviation. This translates into approximately a 2% difference in annual earnings as an adult. To put the magnitude of this birth order effect in another perspective, the black-white IQ gap in the United States is typically measured to be about 1 standard deviation. We also begin to investigate the underlying causes of this relationship, including examining the impact of controlling for birth characteristics in order to assess the role of biological explanations.

## 2. Data

Our primary data source is the birth records for all Norwegian births over the period 1967 to 1998 obtained from the Medical Birth Registry of Norway. All births, including those born outside of a hospital, are included as long as the gestation period was at least 16 weeks.<sup>4</sup> The birth records contain information on year and month of birth, birth weight, gestational length, age of mother, and a range of variables describing infant health at birth. In these data, we are also able to identify twin births. We can measure family size by counting the number of births to each woman in these data. Our sample is composed of families in which the first birth took place during or after 1967.<sup>5</sup> Given that

---

<sup>3</sup> Our data provide information on the IQ scores of men aged between 18 and 20. IQ at these ages is particularly interesting as it is about the time of entry to the labor market or to higher education.

<sup>4</sup> The data also include stillbirths, which constitute approximately 15 per 1000 births. We exclude these from the sample.

<sup>5</sup> The Norwegian Family Register provides an independent measure of family size for each woman. This file is updated annually and the most recent available version is for 2002. We obtain a second measure of family size from the 2002 file (using annual files between 1998-2001 to fill in family size for women who are missing in the 2002 file). Reassuringly, for over 94% of observations, the family size from the Family Register equals the family size that results in counting births from the birth register. For a further 2.2% of observations, no family size number is reported in the Family Register so we use the count of births from the birth records as our family size measure. For an additional 3% of cases, the number from the Family Register exceeds the count from the birth records. In these cases we assume that additional children were born after 1998 and use the number from the Family Register as our family size measure. For 0.3% of cases, more births are counted in the birth files than are reported in the Family Register but there is no indication in the birth files that there has been any infant mortality. For these cases, we set our measure of family size to be the count from the birth records. For approximately 0.3% of cases, we observe the family

we observe year of birth, we are able to construct indicators for the birth order of each child directly from the birth register.

Using unique personal identifiers, we match these files to the Norwegian Registry Data, a linked administrative dataset that covers the population of Norwegians aged 16-74 in the 1986-2002 period and is a collection of different administrative registers such as the education register, family register, and the tax and earnings register. These data are maintained by Statistics Norway and provide information about educational attainment, labor market status, earnings, and a set of demographic variables (age, gender) as well as information on families.<sup>6</sup>

The IQ data are taken from the Norwegian military records from 1984 to 2005. In Norway, military service is compulsory for every able young man. Before entering the service, their medical and psychological suitability is assessed; this occurs for the great majority between their eighteenth and twentieth birthday.<sup>7</sup> The IQ measure is a composite score from three speeded IQ tests -- arithmetic, word similarities, and figures (see Sundet et al. [2004, 2005] and Thrane [1977] for details). The arithmetic test is quite similar to the arithmetic test in the Wechsler Adult Intelligence Scale (WAIS) [Sundet et al. 2005;

---

register reporting fewer children than the birth registry due to the death of a child within the first year. Because of the difficulty of assigning birth order in these cases, we have excluded these families from our sample.

<sup>6</sup> Educational attainment is reported by the educational establishment directly to Statistics Norway, thereby minimizing any measurement error due to misreporting. The education register started in 1970; we use information from the 1970 Census for individuals who completed their education before then. Census data are self reported but the information is considered to be very accurate; there are no spikes or changes in the education data from the early to the later cohorts. See Møen, Salvanes and Sørensen [2003] for a description of these data.

<sup>7</sup> Of the men in the 1967-1987 cohorts, 1.2 percent died before 1 year and 0.9 percent died between 1 year of age and registering with the military at about age 18. About 1 percent of the sample of eligible men had emigrated before age 18, and 1.4 percent of the men were exempted because they were permanently disabled. An additional 6.2 percent are missing for a variety of reasons including foreign citizenship and missing observations. See Eide et al. [2005] for more details. There are also some missing IQ scores for individuals who showed up to the military. In total, we have IQ scores on about 84% of the relevant population.

Cronbach 1964]. The word test is similar to the vocabulary test in WAIS, and the figures test is similar to the Raven Progressive Matrix test [Cronbach 1964]. The composite IQ test score is an unweighted mean of the three subtests. The IQ score is reported in stanine (Standard Nine) units, a method of standardizing raw scores into a nine point standard scale with a normal distribution, a mean of 5, and a standard deviation of 2.<sup>8</sup>

We exclude families in which no child is born before 1987 as no data on military outcomes of children is likely to be available for such families. We drop twins from our estimating samples because of the ambiguities involved in calculating birth order for twins. Table 1 presents summary statistics for our sample and Appendix Table 1 shows the distribution of family sizes in our sample. Most families in our sample have two or three children.

### **3. Birth Order Analysis**

#### *Birth Order Literature*

Blake (1989) describes the stringent data requirements necessary to identify birth order effects in cross sectional analyses. Because higher rank children are more likely to be born into larger families, she stresses the need to control for family size effects. Because higher rank children are more likely to be born in later years, she stresses the need to control for cohort effects. Because higher rank children are more likely to have older parents at birth, she stresses the need to control for parent cohort effects. And, because parents differ across families, she stresses the need to control for parental characteristics in cross-sectional (cross-family) analysis. Because of these requirements, in order to provide credible estimates of birth order using cross-family variation, one

---

<sup>8</sup> The correlation between this IQ measure and the WAIS IQ has been found to be .73 (Sundet et al., 1988).

needs to have multiple cohorts for each birth order so one can control for cohort effects, and one needs to have full fertility histories so one can control for mother's age at birth and mothers age at first birth (which will be correlated with birth order conditional on child cohort and mother cohort). Also, one needs to have access to parental characteristics like mother's education, as they may also be correlated with birth order conditional on child and mother cohort.

A particularly influential cross-sectional study is that by Belmont and Marolla (1973). They averaged Raven Progressive Matrices scores from a cross-section of almost 400,000 19-year-old Dutch men born between 1944 and 1947 and found a clear pattern of declining intelligence by birth order within family size groups. These findings inspired the confluence model of Zajonc (1976). However, these results have subsequently been questioned. For example, Blake (1989) suggests that the birth order effects found may simply arise due to a failure to control for cohort effects and parental education; in addition, she suggests the effects may also be due to systematic mortality arising from a famine during 1944 and 1945. More generally, the cross-sectional studies of birth order and IQ have not included the required control variables, often because of data limitations.<sup>9</sup>

More recently, studies have strongly argued that as birth order processes are fundamentally within-family, within-family data are required to study them. Rodgers *et al.* (2000) state "The most important methodological point in this article is that cross-

---

<sup>9</sup> Iacovou (2001) uses the British National Child Development Study (NCDS) and finds that later-born children have poorer educational outcomes and lower test scores than earlier born. While this a very thorough study, it does suffer from some weaknesses. First the sample size is relatively small (about 18,000 initially) and there is much attrition over time (about 50%) so estimates are imprecise and may be subject to attrition bias. Second, all children in the sample are born the same week so, conditional on mother's cohort, birth order is strongly correlated with age at first birth and it is difficult to tease out separate effects of these two variables. Also, as there is only one child per family, within-family analysis is impossible.



sectional data are so filled with potential selection (and other) biases as to be virtually useless in addressing birth order effects on intelligence. Yet, most of what researchers know (or believe that they know) about family structure and its influence on intellectual development derives from cross-sectional data". As discussed above, we believe that sufficiently rich cross-sectional data can be informative about birth order effects if used properly. However, there are obvious attractions to comparing siblings within families, as it ensures that there are no confounding across-family processes. Note that there can still be biases in within-family analyses as parents of later-born children are older, and later born children belong to different cohorts. These issues can be dealt with using cohort indicators for each child. Essentially, birth order effects are then identified from the unequal spacing of births.<sup>10</sup>

The within-family literature on birth order and IQ consists of a small number of studies that have generally failed to find statistically significant birth order effects.<sup>11</sup> However, most studies have used small, non-representative samples (Berbaum and Moreland 1980 studied 51 families; Galbraith 1982 used a sample of Brigham Young students). Retherford and Sewell (1991) used the Wisconsin Longitudinal Survey of high school graduates in 1957 and found no statistically significant sibling differences in IQ by birth order. However there are issues with sample selection (the main respondent must be

---

<sup>10</sup> When cohort effects are included, identification of birth order effects relies on the fact that birth order does not perfectly correspond to cohort. If children were always born one year apart, cohort effects would absorb the birth order effects; we are thus identified off of unequal spacing of children.

<sup>11</sup> A related literature has studied the effects of birth order on educational attainment (Behrman and Taubman 1986; Hanushek 1992; Hauser and Sewell 1985). In recent work (Black, Devereux, and Salvanes 2005), we studied educational outcomes of earlier cohorts of Norwegians using within-family models in addition to OLS. We found strong birth order effects in education, with educational attainment falling monotonically with birth order. Subsequent studies using data from several countries (for example, Booth et al, 2006) have found similar effects for education. However, these studies do not have data on intelligence.

a high school graduate and education and IQ are correlated), and sample sizes are relatively small (about 500 pairs in a typical sibling comparison). Most importantly, they do not control for child cohort/parental age at birth, and it is not clear how large the age gaps are between the respondent and the other randomly chosen sibling used in the comparisons. A more compelling dataset was used by Rodgers *et al.* (2000) who analyzed the effects of birth order on the IQ of children aged between 5 and 15 using data from the National Longitudinal Survey of Youth (NLSY).<sup>12</sup> They found that, using within-family analysis, average scores were not statistically different by birth order within family size classes. However, they have relatively small sample sizes (565 2-child families, 233 3-child families, and 56 4-child families) and do not carry out any multivariate analysis; as a result, their estimates may be confounded by potentially important child cohort and parent age effects.<sup>13</sup>

In this paper, we are able to address many of the limitations of earlier work by using data on the population of Norway matched to new data on IQ in order to convincingly identify the relationship between birth order and IQ. We use both cross-sectional and within-family approaches. We then investigate some potential causes for these birth order effects. In particular, we investigate the role of birth endowments by analyzing how birth weight and other birth characteristics are influenced by birth order and how conditioning on these characteristics affects the magnitude of birth order effects.

---

<sup>12</sup> Their IQ measure was obtained by averaging the PIAT subscales from Reading Recognition, Reading Comprehension, and Mathematical Achievement for two successive administrations of these tests (ie. Six scores in all were averaged).

### *Birth Order Results for IQ*

The average IQ level by birth order is listed in Table 2 and the distribution by birth order is presented in Figure 1. There is a clear pattern of declining IQ for higher birth orders. Also, it is clear from Figure 1 that the averages are not being excessively influenced by either tail of the ability distribution. However, these summary statistics can be misleading in that we are not controlling for family size, cohort effects, or any other demographic characteristics that may be correlated with birth order. To remedy this, we estimate the relationship between birth order and IQ in a regression framework. In order to avoid any confounding family size effects, we run separate regressions by family size and include families of 2, 3, 4, and 5 (fewer than 1% of families have more than 5 children. See Appendix Table 1 for more detail). The results are presented in Table 3.

Each column in Table 3 represents a separate regression for a particular family size. We first present estimates where there are no control variables included. If we look across row one, we can see the effect of being a “second child” (omitted category is first child) is large and negative for all family sizes. Our IQ measure is on a scale from one to nine; thus a coefficient of  $-.3$  on 2<sup>nd</sup> child suggests that second children have on average a score of .3 lower than first children (a difference of about 30% of a stanine or 15% of a standard deviation). In general, we find that IQ scores decline as birth order increases.

On the right hand side of Table 3, we include a set of control variables. These include indicator variables for cohort, age at test, age of mother at birth, age of mother at first birth, years of education of mother, and years of education of father. We also include

---

<sup>13</sup> Also, IQ is measured at different ages for different children in this study. This is a pervasive problem in the birth order and IQ literature. It is not a problem for us as all men are tested about age 19.

controls for IQ of the father for cases in which this is available.<sup>14</sup> When we include these extra controls, we find birth order effects that are qualitatively similar to earlier but which are quantitatively larger, strongly supporting the idea that later-born male children tend to have lower IQ scores. The substantial difference in the magnitudes of the estimated birth order effects with and without controls demonstrates the importance of conditioning out other possible confounding factors.<sup>15</sup>

The within-family estimates using family indicators are in Table 4. The estimates are very similar to those using cross-sectional variation, suggesting that the estimated birth order effects do not reflect omitted family characteristics. As with the cross-sectional estimates, the magnitude of the estimated effects increases with the addition of control variables (in this case cohort indicators) showing the importance of factoring out effects of mother's age at birth and child cohort effects. Our birth order findings are very different to that of Rodgers et al. (2000) and others that have used within-family analysis to estimate birth order effects and find little significant relationship between birth order and IQ. While we are not sure of the causes of the differences, we suspect it is in part related to our inclusion of cohort effects and our access to a much larger data set.<sup>16</sup>

---

<sup>14</sup> We do this by setting father's IQ to zero for cases in which it is missing and then interacting father's IQ with a dummy variable which is one if we have information on father's IQ and zero otherwise. Both these variables are then included in the regression.

<sup>15</sup> It is well known that families in which the first two children are the same sex are more likely to have a third child than families in which the first two children are opposite in sex. This suggests that there might be systematic differences between same-sex two child families and opposite-sex two child families. For this reason, we have tried estimating separate birth order specifications for these two groups of two child families. We found estimates that are similar to each other and to those reported in Table 3.

### *Why might Birth Order affect IQ?*

There are many reasons why there might be birth order effects on IQ. Although there is no genetic component to birth order, there may be biological differences by birth order resulting from differing experiences in utero. For example, the quality of pre-natal care or the behavior of expectant mothers may differ by birth order. We can use information about birth characteristics to explore biological explanations further. Appendix Table 3 shows the correlations between birth characteristics, IQ, and birth order. There are clear positive correlations between birth weight, birth length, and head size at birth with IQ (all correlations in the table are statistically significant). Interestingly, these positive birth characteristics are also positively correlated with birth order, so later-borns actually have *better* measured birth characteristics. Not surprisingly then, when we include these characteristics in the birth order regressions (see Appendix Table 4), we find that the birth order effects increase. Thus, as far as we can tell, biological factors are not responsible for the birth order effects we have found.

An additional possibility is that birth order effects occur because of separations and divorces; later-borns will be younger when the split occurs and may be more affected by it. However, this is not what is driving our birth order effects; when we re-estimate all regressions on the subset of families in which all children have the same parents and both parents are still together 20 years after the first child is born, we find birth order effects that are very similar in magnitude to those reported in the tables.

Alternative models are those based on the idea of resource dilution. One important resource is time; first-borns may benefit from having the exclusive attention of their

---

<sup>16</sup> It is interesting to note that, despite the large within-family differences in IQ by birth order, these differences explain only about 3% of the within-family variance in IQ.

parents, while later-borns have to share time with their earlier-born siblings. Price (2006) uses time-use data to show that later-borns get less parental time than earlier-borns received at that same age. One might expect that if the time constraint explanation is important, birth order effects would be larger in more closely spaced families. We have tried interacting birth order dummies with the spacing gap between the first and last child; we found no evidence that birth order effects are related to spacing.

Likewise, if there are credit constraints, financial resources may be more plentiful when there are fewer children in the household, and this will benefit first-borns. In general, resource dilution arguments suggest that later-borns will have poorer outcomes. In order to try to test this, we have calculated the percentage income growth of the father over the 15 years after the year of birth of the first child and interacted that with the birth order effects. One might expect that if financial resource constraints were an important determinant of birth order effects, these effects would be smaller in families with faster income growth. However, when we interact the income growth rate over these 15 years with the birth order effects, we find no evidence for this hypothesis.

Birth order effects could also be the result of changing parental behaviors post-birth. Parents of later-borns are more experienced and this may prove beneficial. On the other hand, standard diminishing marginal utility arguments suggest that parents might invest more in earlier-borns. The confluence model of Zajonc (1976) suggests that first-borns benefit from living in a more adult environment and from having younger siblings to teach. Unfortunately, our data are not suitable for evaluating the role of these explanations.

## 4. Conclusions

In contrast to previous research, we find strong birth order effects on IQ that are present both in cross-sectional and within-family analysis. Later-born children have a lower IQ on average, and the differences are quite large. For example, the difference between first-born and second-born average IQ is on the order of one fifth of a standard deviation. This translates into approximately a 2% difference in annual earnings as an adult.<sup>17</sup> To put the magnitude of this birth order effect in another perspective, the black-white IQ gap in the United States is typically measured to be about 1 standard deviation.

Our birth register data enable us to assess the role of biological explanations for birth order effects. We find that measured endowments of children at birth cannot explain our birth order effects and, in fact, the birth order effects increase once we control for birth characteristics. There is also no evidence that the birth order effects results from separations and divorce, or from resource constraints. There are many other possible explanations for birth order effects but we are unable to assess their role with our data.

What are the implications of the large birth order effects we have found? First, one might expect that they would explain a large part of the within-family variance in IQ. In fact, they explain only about 3% of the within-family variance; most sibling differences in IQ are related to genetic and other hard-to-observe factors.

A second implication of strong birth order effects is that researchers should be cautious when using estimators based on within-family indicators models as there may be

---

<sup>17</sup> We arrive at this number by regressing log earnings in 2002 on IQ scores for individuals aged at least 30 in 2002. For both cross-sectional and family fixed effects specifications we obtain precisely estimated coefficients on ability of about .06, suggesting an extra stanine in ability (about half a standard deviation) leads to about 6% higher earnings.

biases if birth order is ignored. For example, Appendix Table 6 shows the estimates when within-family indicators are used to evaluate the impact of the age of mother at birth on child IQ. In the absence of birth order controls, the estimates strongly suggest that children born to younger mothers have higher IQ on average. With birth order controls, this result disappears and one finds higher IQs when mothers are aged 20 – 35 rather than aged less than 20. This issue is likely to arise in within-family studies of other outcome variables as well.



## References

- Angrist, Joshua D. and William N. Evans, "Children and Their Parents' Labor Supply: Evidence from Exogenous Variation in Family Size." *American Economic Review*, Vol. 88, No. 3, June, 1998, 450-477.
- Angrist, Joshua D., Victor Lavy, and Analia Schlosser, "New Evidence on the Causal Link between the Quantity and Quality of Children", NBER Working Paper #11835. 2005.
- Becker, Gary S., "An Economic Analysis of Fertility" In Becker, ed., *Demographic and Economic Change in Developed Countries*. Princeton, N.J.: Princeton University Press 1960.
- Becker, Gary S. and Robert J. Barro. "A Reformulation of the Economic Theory of Fertility." *Quarterly Journal of Economics*, v103, n1, pp 1-25, 1988.
- Becker, Gary S. and H. Gregg Lewis "On the Interaction Between the Quantity and Quality of Children" *Journal of Political Economy*, 1973, Vol. 81, No. 2, S279-S288.
- Behrman, Jere R. and Paul Taubman, "Birth Order, Schooling, and Earnings." *Journal of Labor Economics*, 1986. Vol 4, No. 3.
- Belmont L. and F.A. Marolla (1973), "Birth Order, Family Size, and Intelligence" *Science*, 182, 1096-1101.
- Berbaum, M.L. and R.L. Moreland (1980), "Intellectual Development within the Family: A new application of the confluence model" *Developmental Psychology*, 16, 500-515.
- Black, Sandra E., Paul J. Devereux, and Kjell G. Salvanes, "The More the Merrier? The Effects of Family Size and Birth Order on Children's Education," *Quarterly Journal of Economics*, CXX (2005a), 669-700.
- Blake, Judith, *Family Size and Achievement*, 1989, University of California Press, Berkeley and Los Angeles.
- Booth, Alison L. and Hiau Joo Kee. "Birth Order Matters: The Effect of Family Size and Birth Order on Educational Attainment" Working Paper, 2006.
- Bronars, Stephen G. and Jeff Grogger, "The Economic Consequences of Unwed Motherhood: Using Twin Births as a Natural Experiment." *American Economic Review*, Vol 84, No. 5. December, 1994. 1141-1156.

- Butcher, Kristin F., and Anne Case (1994), "The Effect of Sibling Sex Composition on Women's Education and Earnings", *Quarterly Journal of Economics*, Vol. CIX, Issue 3, 531-563.
- Cáceres-Delpiano, Julio (2007), "The Impacts of Family Size on Investment in Child Quality" *Journal of Human Resources*, 41(4).
- Conley, Dalton, "What is the "true" effect of sibship size and birth order on education? Instrumental variable estimates from exogenous variation in fertility." Mimeo, 2004.
- Conley, Dalton, "Sibling Sex Composition: Effects on Educational Attainment" (2000), *Social Science Research*, Vol. 29, 441-457.
- Cronbach, Lee J., *Essentials of Psychological Testing, 2nd Edition*, (London, UK: Harper and Row, 1964).
- Dahl, Gordon and Enrico Moretti, "The Demand for Sons: Evidence from Divorce, Fertility, and Shotgun Marriage." Working paper, 2004.
- Datar, Ashlesha, M. Rebecca Kilburn, and David S. Loughran, "Health Endowments and Parental Investments in Infancy and Early Childhood," RAND Labor and Population Working Paper No. WR-367, 2005.
- Deschenes, Olivier, "Estimating the Effects of Family Background on the Return to Schooling" (March 1, 2002). *Department of Economics, UCSB. Departmental Working Papers*. Paper 10-02.
- Doepke, Matthias, "Accounting for Fertility Decline During the Transition to Growth." Working Paper, UCLA, 2003.
- Eide, Martha G., Nina Øyen, Rolv Skjærven, Stein Tore Nilsen, Tor Bjerkedal and Grethe S. Tell, "Size at Birth and Gestational Age as Predictors of Adult Height and Weight," *Epidemiology*, XVI (2005), 175-181.
- Galbraith, R.C. (1982) "Sibling Spacing and Intellectual Development: A closer look at the confluence models" *Developmental Psychology*, 18, 151-173.
- Hanushek, Eric A., "The Trade-off between Child Quantity and Quality" *Journal of Political Economy*, 1992. Vol 100, No. 1.
- Hauser, Robert M., and Hsiang-Hui Daphne Kuo (1998), "Does the Gender Composition of Sibships affect Women's Educational Attainment?," *Journal of Human Resources*, Vol. 33, No. 3, 644-657.

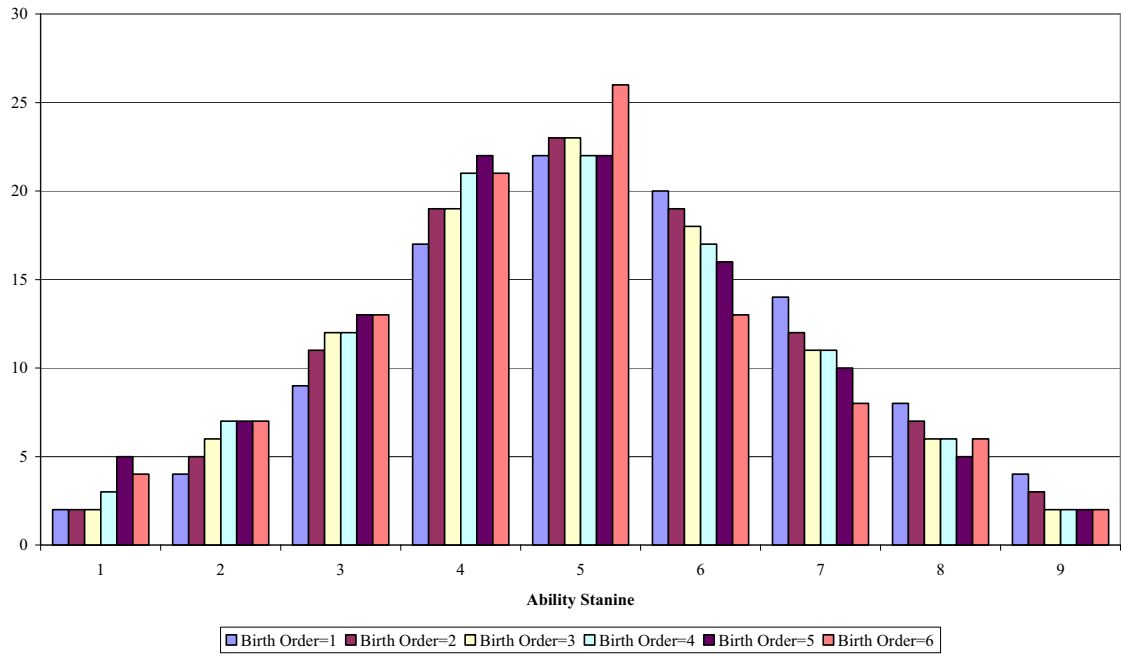
- Hauser, Robert M., and William H. Sewell (1985), "Birth Order and Educational Attainment in Full Siblings", *American Educational Research Journal*, Vol. 22, No. 1, 1-23.
- Iacovou, Maria (2001), "Family Composition and Children's Educational Outcomes", Working Paper.
- Jacobsen, Joyce P., James Wishart Pearce III, and Joshua L. Rosenbloom, "The Effects of Childbearing on Married Women's Labor Supply and Earnings: Using Twin Births as a Natural Experiment." *Journal of Human Resources*, Summer 1999.
- Lee, Jungmin, "Children and Household Education Decisions: An Asian Instrument." Working Paper, 2003.
- Møen, Jarle, Kjell G. Salvanes and Erik Ø. Sørensen, "Documentation of the Linked Employer-Employee Data Base at the Norwegian School of Economics," Mimeo, The Norwegian School of Economics and Business Administration, 2004.
- Price, Joseph, "Quality Time: The Effect of Birth Order" Working Paper, 2006.
- Retherford, R.D. and W.H. Sewell. "Birth Order and Intelligence: Further Tests of the Confluence Model", *American Sociological Review*, 56, 141-158.
- Rodgers Joseph L., H. Harrington Cleveland, Edwin van den Oord, and David C. Rowe, "Resolving the Debate over Birth Order, Family Size, and Intelligence" *American Psychologist*, 55(6) 599-612 (2000).
- Rogers, Joseph L., What Causes Birth Order- Intelligence Patterns?" *American Psychologist*, 56(6/7) 505-510 (2001).
- Rosenzweig Mark R., and Kenneth I. Wolpin, "Testing the Quantity-Quality Fertility Model: The Use of Twins as a Natural Experiment", *Econometrica*, Vol. 48, No. 1, 227-240 (Jan, 1980).
- Rosenzweig Mark R., and Junsen Zhang, "Do Population Control Policies Induce more Human Capital Investment? Twins, Birthweight, and China's 'One Child' Policy" IZA Working Paper 2082. April 2006.
- Sundet, Martin Jon, Dag G. Barlaug, and Tore M. Torjussen, "The End of the Flynn Effect? A Study of Secular Trends in Mean Intelligence Test Scores of Norwegian Conscripts During Half a Century", *Intelligence* , XXXII (2004), 349-362.
- Sundet, Jon Martin, Kristian Tambs, Jennifer R. Harris, Per Magnus, and Tore M. Torjussen (2005), "Resolving the Genetic and Environmental Sources of the Correlation Between Height and Intelligence: A Study of Nearly 2600 Norwegian

Male Twin Pairs,” *Twin Research and Human Genetics*, VII (2005), 1-5.

Thrane, Vidkunn Coucheron, “Evneprøving av Utskrivingspliktige i Norge 1950-53,”  
Arbeidsrapport nr. 26, INAS 1977.

Zajonc R. B., “Family Configuration and Intelligence” *Science*, Vol. 192, 227-236, 1976.

**Figure 1:**  
**Distribution of Ability by Birth Order**



**Table 1**  
**Summary Statistics**

---

Variable	Mean (Standard Deviation)
Age in 2002	25 (6)
Education	12.3 (1.9)
IQ (stanines)	5.2 (1.8)
Mother's Education	11.3 (2.5)
Mother's Age in 2002	50.5 (6.2)
Father's Education	11.8 (2.9)
Father's Age in 2002	53.6 (6.7)

---

Sample Size: N=388,405 male singletons.

Education is calculated for a subsample of 282,855 men aged at least 21 in 2002.

**Table 2**  
**Birth Order and IQ**

Birth Order	Average IQ	N
1st	5.4 (1.8)	201,789
2nd	5.1 (1.8)	134,692
3rd	5.0 (1.8)	42,042
4th	4.9 (1.8)	7,879
5th	4.7 (1.8)	1,422
6 <sup>th</sup> or later	4.7 (1.8)	581

**Table 3: Effect of Birth Order on Children's IQ (OLS)**

	No Controls					Controls				
	Two Child Family	Three Child Family	Four Child Family	Five Child Family		Two Child Family	Three Child Family	Four Child Family	Five Child Family	
Second Child	-.267* (.008)	-.235* (.010)	-.234* (.020)	-.188* (.044)		-.316* (.013)	-.344* (.013)	-.348* (.023)	-.297* (.048)	
Third Child		-.354* (.012)	-.351* (.022)	-.277* (.048)			-.563* (.023)	-.560* (.035)	-.490* (.067)	
Fourth Child			-.403* (.026)	-.267* (.054)				-.707* (.051)	-.562* (.092)	
Fifth Child				-.436* (.066)					-.778* (.122)	
N	170628	132929	41805	10214		170628	132929	41805	10214	

\* indicates statistical significance at the 5% level. Standard errors (in parentheses) allow for correlation of errors within family. Each column represents a separate regression. The regressions with controls include indicators for age, test year, mother's age, mother's age at first birth, mother's education, father's education, and father's IQ. Omitted Category is first child.



**Table 4: Effect of Birth Order on Children's IQ  
Within-Family Estimates**

	No Controls					Controls				
	Two Child Family	Three Child Family	Four Child Family	Five Child Family		Two Child Family	Three Child Family	Four Child Family	Five Child Family	
Second Child	-.322* (.011)	-.291* (.012)	-.264* (.023)	-.240* (.048)		-.337* (.023)	-.356* (.018)	-.346* (.029)	-.306* (.058)	
Third Child		-.458* (.014)	-.444* (.025)	-.397* (.051)			-.595* (.034)	-.623* (.048)	-.528* (.085)	
Fourth Child			-.519* (.030)	-.382* (.057)				-.802* (.072)	-.550* (.122)	
Fifth Child				-.540* (.068)					-.744* (.165)	
N	170628	132929	41805	10214		170628	132929	41805	10214	

\* indicates statistical significance at the 5% level. Standard errors (in parentheses) allow for correlation of errors within family. Each column represents a separate regression. The regressions with controls include indicators for age and test year. Omitted category is first child.

**Appendix Table 1**  
**Distribution of Family Size**

Family Size	Percentage
1	10
2	47
3	31
4	9
5	2
6 or more	1

**Appendix Table 2**  
**Correlations between IQ, Birth Order, Family Size, and Birth Characteristics**

	IQ	Birth Order	Family Size	Log Birth Weight	Weeks Gestation	Head Size	Length	5 Minute APGAR
IQ	1							
Birth Order	-.08	1						
Family Size	-.04	.46	1					
Log Birth Weight	.07	.14	.07	1				
Weeks Gestation	.02	-.01	.01	.46	1			
Head Size	.08	.11	.06	.70	.36	1		
Length	.07	.07	.05	.82	.41	.58	1	
5 Minute APGAR	.01	.05	.02	.11	.09	.03	.04	1

The above are correlations between the listed variables. All correlations are statistically greater than zero. All variables measured between 1967 and 1987 except head size and 5 minute APGAR score which are only available from 1977-1987. All correlations use all available observations for the two variables.

**Appendix Table 3: Effect of Birth Order on Children's IQ with Controls for Birth Characteristics**

	OLS with Controls					Family Fixed Effects with Controls				
	Two Child Family	Three Child Family	Four Child Family	Five Child Family		Two Child Family	Three Child Family	Four Child Family	Five Child Family	
Second Child	-.345* (.013)	-.368* (.013)	-.371* (.023)	-.322* (.049)		-.365* (.023)	-.384* (.018)	-.374* (.030)	-.319* (.059)	
Third Child		-.592* (.023)	-.590* (.035)	-.523* (.068)			-.631* (.034)	-.659* (.048)	-.550* (.085)	
Fourth Child			-.738* (.051)	-.597* (.093)				-.843* (.073)	-.580* (.122)	
Fifth Child				-.813* (.123)					-.773* (.165)	
Log Birth Weight	.408* (.044)	.406* (.050)	.492* (.090)	.267 (.183)		.572* (.100)	.532* (.087)	.607* (.140)	.388 (.256)	
Weeks Gestation	-.020* (.002)	-.014* (.003)	-.021* (.005)	-.014 (.010)		-.015* (.005)	-.013* (.004)	-.021* (.007)	-.023 (.013)	
Length	.015* (.003)	.012* (.003)	.009 (.006)	.024* (.012)		-.0005 (.007)	.011 (.006)	.002 (.009)	.000 (.017)	
Head Size	.028* (.004)	.030* (.005)	.027* (.009)	.058* (.017)		.007 (.010)	.017* (.008)	.005 (.014)	.056* (.024)	
5 Minute APGAR score	.035* (.008)	.029* (.009)	.060* (.016)	-.023 (.031)		.089* (.019)	-.002 (.016)	.022 (.025)	.030 (.046)	
N	170628	132929	41805	10214		170628	132929	41805	10214	

\* indicates statistical significance at the 5% level. Standard errors (in parentheses) allow for correlation of errors within family. Each column represents a separate regression. The regressions with controls include indicators for age, test year, mother's age, mother's age at first birth, mother's education, father's education, and father's IQ. Omitted Category is first child.

**Appendix Table 4**  
**Effect of Mother's age at birth on Children's IQ**  
**Within-Family Estimates**

	Two Child Family		Three Child Family	
Mother aged 20 - 35	-.25*	.08*	-.25*	.11*
	(.03)	(.03)	(.03)	(.03)
Mother aged 36+	-.63*	.03	-.64*	.04
	(.07)	(.07)	(.05)	(.05)
Second Child		-.33*		-.31*
		(.01)		(.01)
Third Child				-.47*
				(.02)
N	170628	170628	132929	132929

\* indicates statistical significance at the 5% level. Standard errors (in parentheses) allow for correlation of errors within family. Each column represents a separate regression. Omitted categories are mother aged less than 20 and boy is first child.