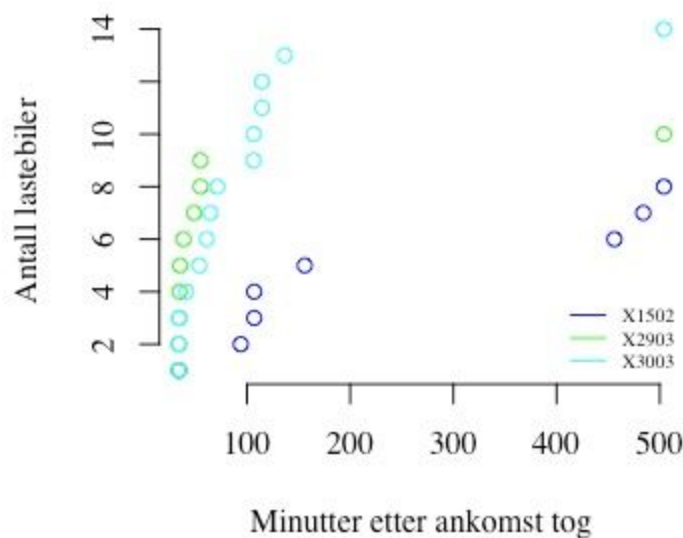
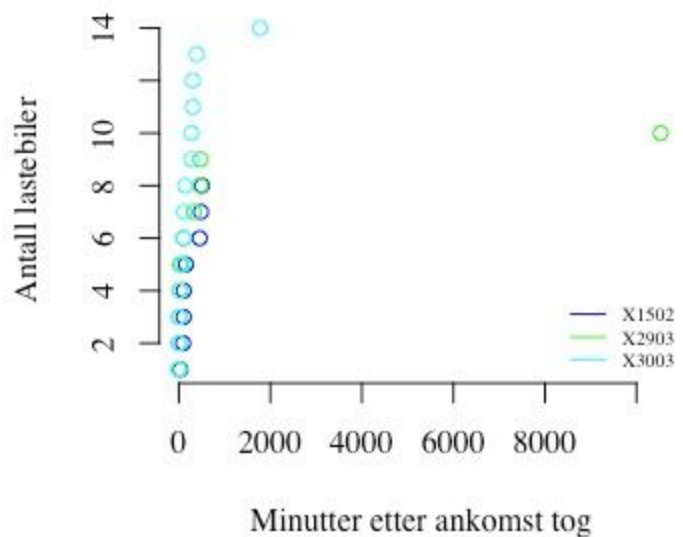


Vedlegg 1 - Lastebil henting R

Under vises datasettene (inkludert ekstremverdier) for de ulike togene i sin helhet. I oppgaven benytter vi IAT nivå på lastebilers ankomst, men i dette vedlegget vil vi benytte minutter etter ankomst på tog som utgangspunkt.

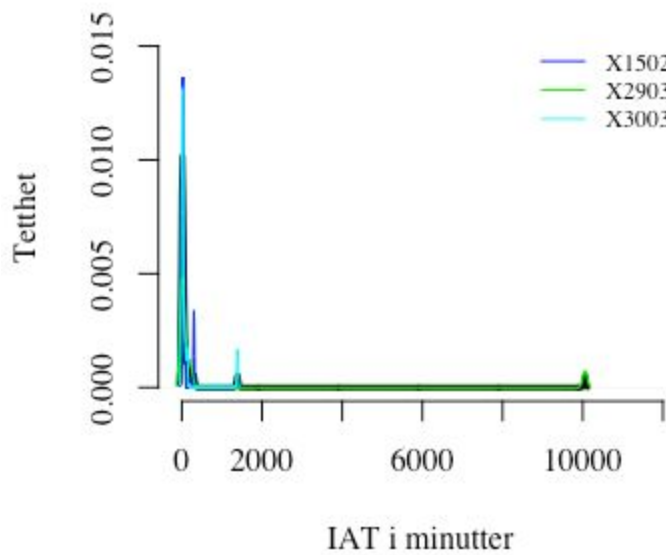
5501 - toget

Grafene og tabellen under er basert på de tre datasettene samlet. Datasettene er igjen beregnet med utgangspunkt i lastebilers ankomst etter togets ankomst.

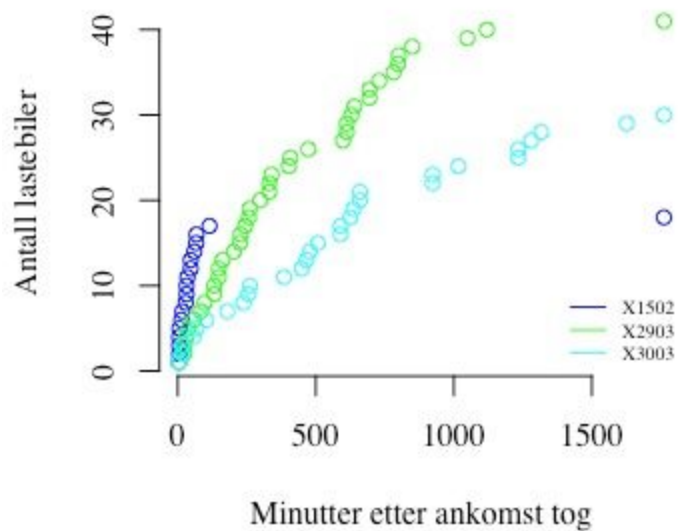
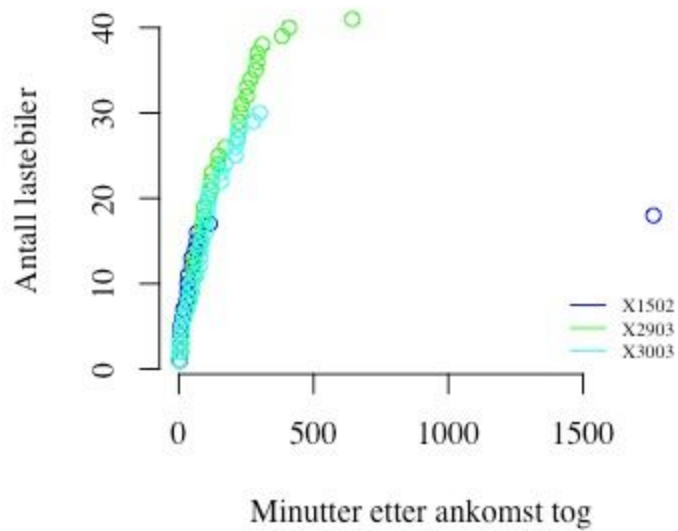


| Antall observasjoner | Gjennomsnitt | Standardavvik | Median | Min | Maks |
|----------------------|----------------|-----------------|--------------|------------|----------------|
| 32 | 552,8 minutter | 1849,5 minutter | 112 minutter | 0 minutter | 10527 minutter |

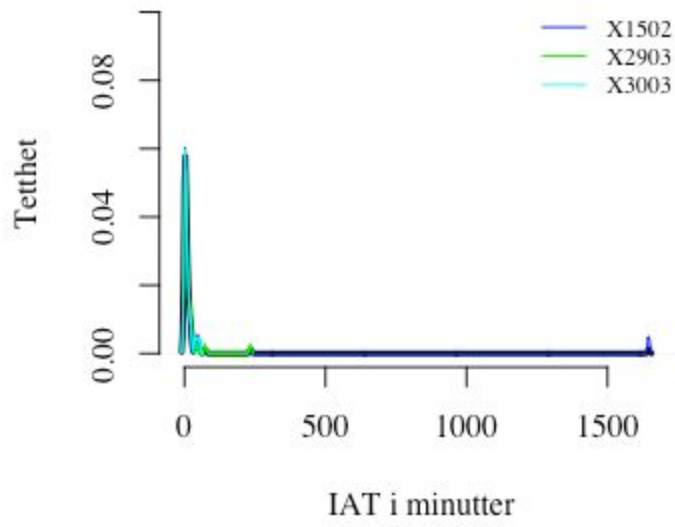
Under vises tettheten i de tre datasettene knyttet til hvert tog. Den svarte linjen er gjennomsnittet av de tre datasettene.



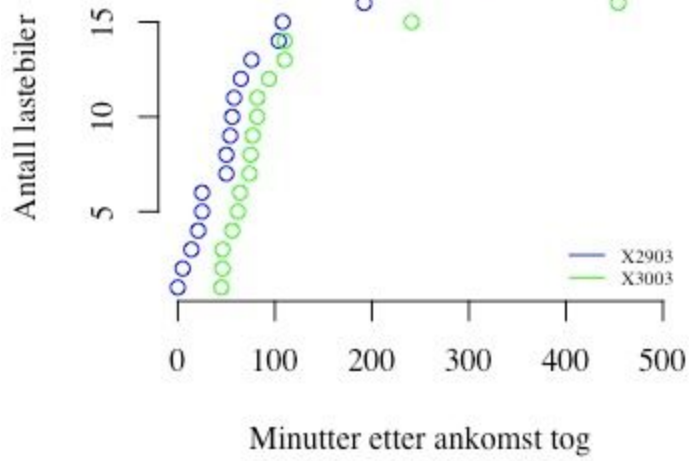
5511- toget

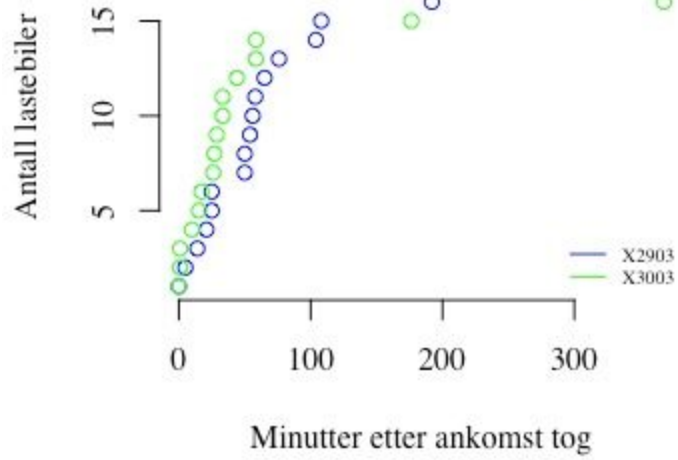


| Antall observasjoner | Gjennomsnitt | Standardavvik | Median | Min | Maks |
|----------------------|--------------|----------------|-------------|------------|---------------|
| 89 | 133 minutter | 208,2 minutter | 81 minutter | 0 minutter | 1761 minutter |

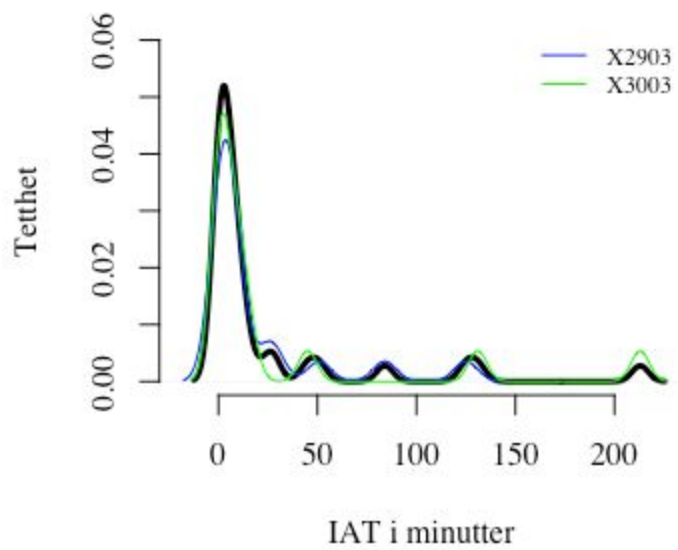


5519 - toget

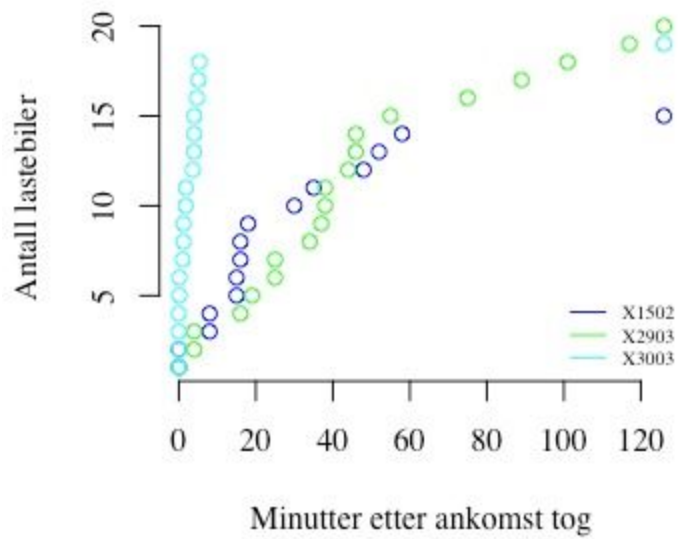
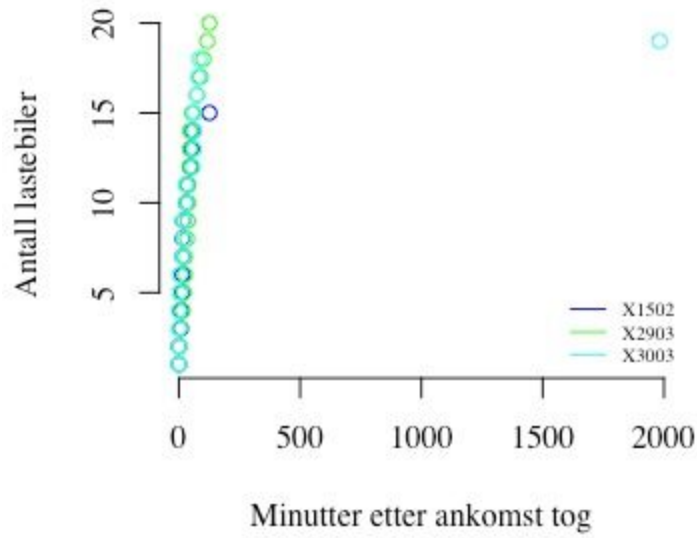




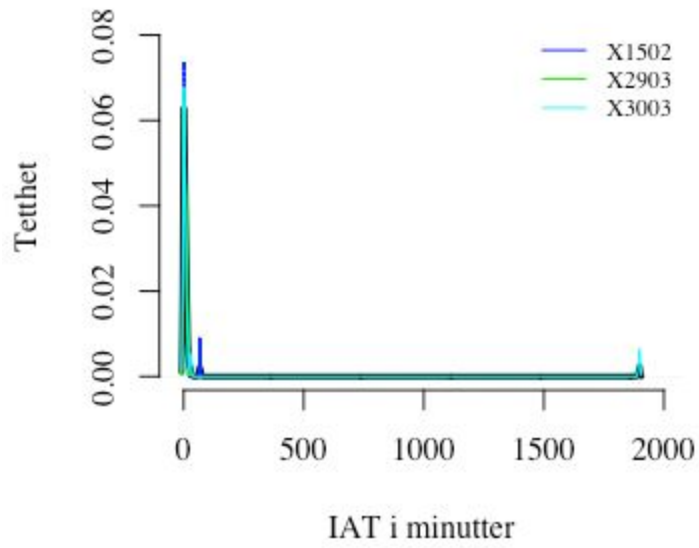
| Antall observasjoner | Gjennomsnitt | Standardavvik | Median | Min | Maks |
|----------------------|---------------|---------------|-------------|------------|--------------|
| 35 | 99,9 minutter | 102 minutter | 65 minutter | 0 minutter | 454 minutter |



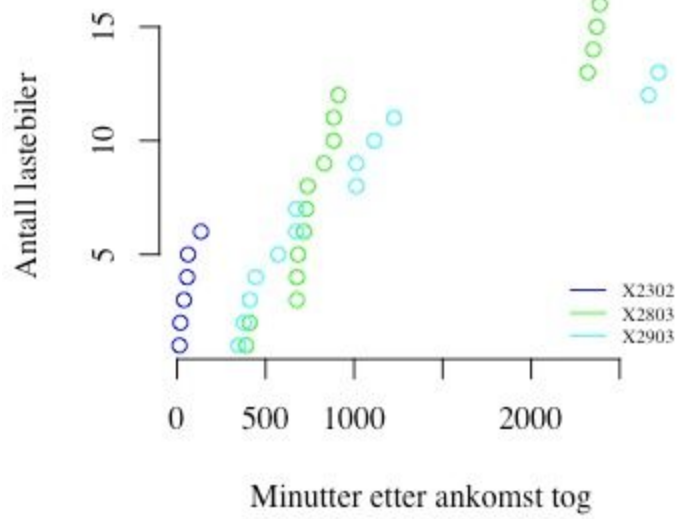
5515 - toget

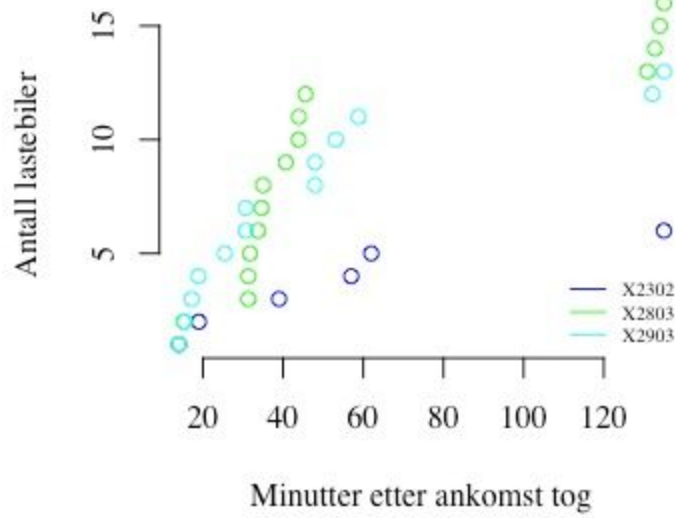


| Antall observasjoner | Gjennomsnitt | Standardavvik | Median | Min | Maks |
|----------------------|---------------|-----------------|---------------|------------|---------------|
| 54 | 73,4 minutter | 266,75 minutter | 29,5 minutter | 0 minutter | 1982 minutter |

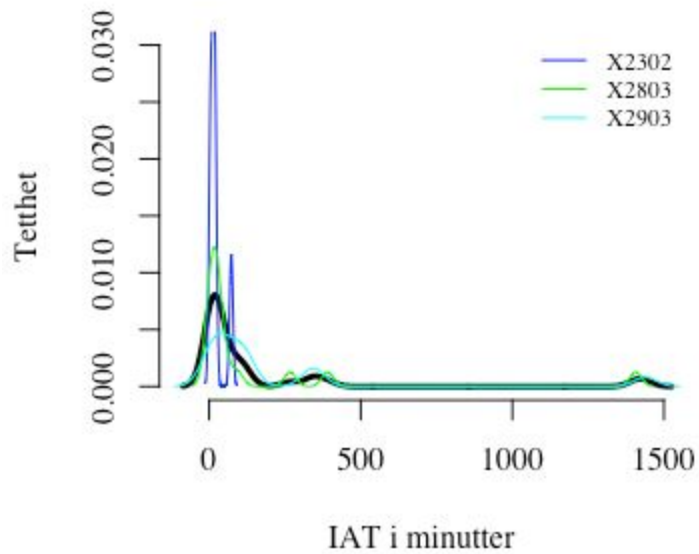


5505 - toget

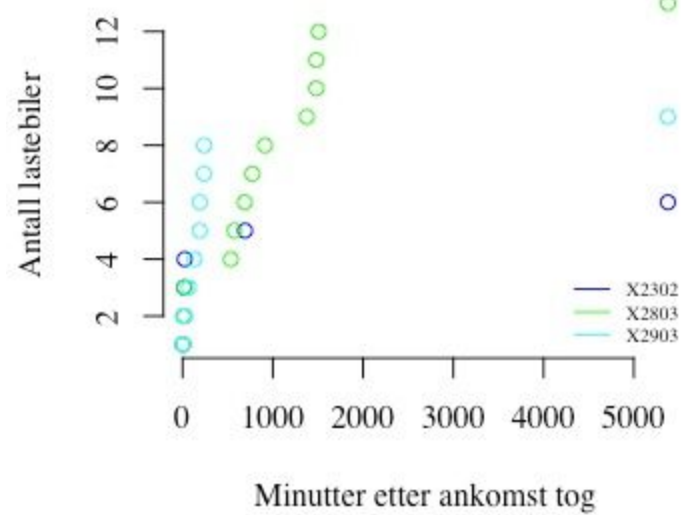
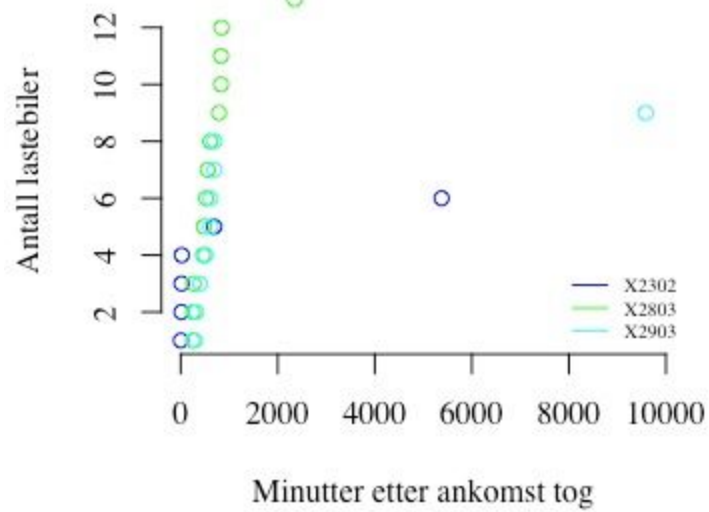




| Antall observasjoner | Gjennomsnitt | Standardavvik | Median | Min | Maks |
|----------------------|----------------|-----------------|--------------|-------------|---------------|
| 35 | 901,1 minutter | 792,75 minutter | 684 minutter | 14 minutter | 2720 minutter |



5507 - toget



| Antall observasjoner | Gjennomsnitt | Standardavvik | Median | Min | Maks |
|----------------------|-----------------|-----------------|----------------|------------|---------------|
| 28 | 1032,1 minutter | 1958,5 minutter | 538,5 minutter | 3 minutter | 9583 minutter |

